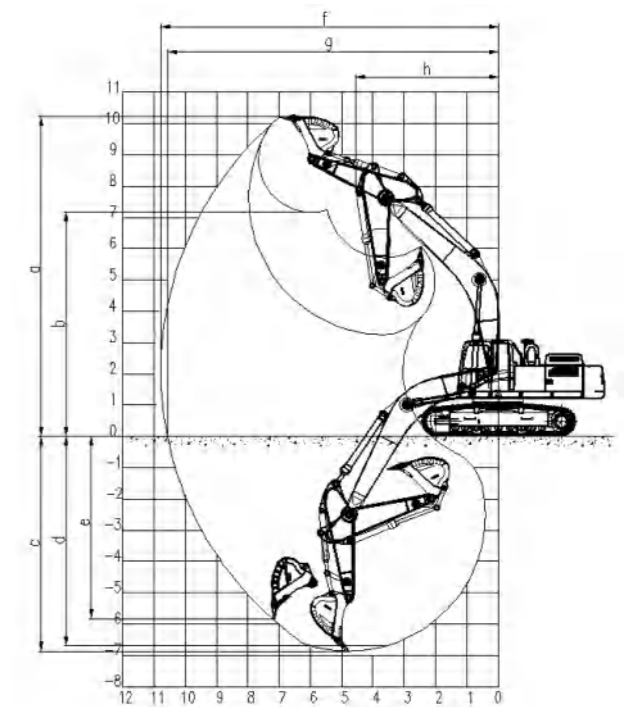
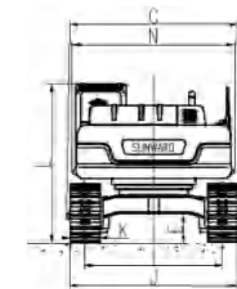
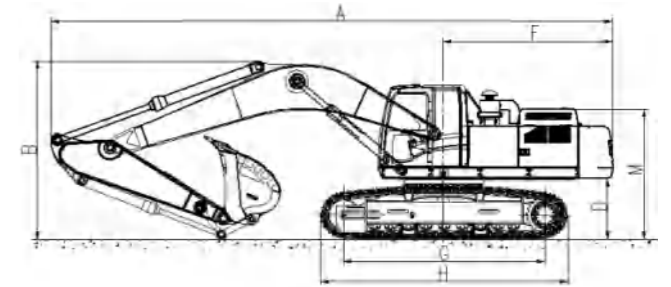




# SWE365E-3H



- ◆ Tier III emission engine with maximum power and stronger power.
- ◆ Large drift diameter KYB400 valve, with its flow capacity increased by 56%.
- ◆ The left and right integrated welded anti collision boundary beams are equipped as standard.
- ◆ The digging force is greater that of other excavators of the same tonnage.
- ◆ Heavy 6.5 m swing arm + heavy 2.9 m bucket arm, good reliability.
- ◆ A 1.8 m<sup>3</sup> hyperbolic rock bucket is equipped.



ENGINE		UNIT	SWE365E-3H
Working weight		kg	36800
Capacity of bucket		m <sup>3</sup>	1.8
Engine	Brand		CUMMINS
	Type		QSL9-305T3
	Rated output power	kW/rpm	214/2100
Dimension parameters	A Transportation length	mm	11200
	B Transportation height	mm	3495
	C Total width	mm	3190
	D Counterweight ground clearance	mm	1200
	E Min. ground clearance	mm	537
	F Tail slewing radius	mm	3445
	G Ground contact length of track	mm	4025
	H Track length	mm	4940
	I Track gauge	mm	2590
	J Track width	mm	3190
	K Creeper tread width	mm	600
	L Cab height	mm	3080
	M Hood height	mm	2665
	N Turntable width	mm	3110
Scope of work	a Maximum excavation height	mm	10390
	b Maximum dumping height	mm	7310
	c Maximum digging depth	mm	7095
	d Digging depth (2.44 mhorizontally)	mm	6925
	e Maximum vertical digging depth	mm	5825
	f Maximum digging distance	mm	10940
	g Maximum digging distance on ground	mm	10725
	h Minimum front slewing radius	mm	4460
Swing arm length		mm	6500
Bucket arm length		mm	2900
Bucket arm digging force		kN	198
Bucket digging force		kN	253
Speed (high/low)		km/h	5.8/3.6
Slewing speed		rpm	9.1
Fuel tank capacity		L	650
Hydraulic fuel tank capacity		L	320