




SUNWARD

HNS
Automobiles Ltd.



 Tower #1, Level #7, Police Plaza Concord Shopping Mall
Dhaka-1212, Bangladesh.

 +880 1777 78 13 51
+880 1708 45 60 37

 sunward@hnsautomobiles.com
info@hnsautomobiles.com

EQUIPMENT



HYDRAULIC STATIC PILE DRIVE



ROTARY DRILLING RIC



EXCAVATOR



WHEEL LOADER



CRAWLER CRANE



TOWER CRANE



ARIAL WORK PLATFORM

SUNWARD

UNDERGROUND ENGINEERING EQUIPMENT



HYDRAULIC STATIC
PILE DRIVER



ROTARY DRILLING
MACHINE

HYDRAULIC STATIC PILE DRIVER



Hitch type border pile device



Crane moment limiter (Optional)



Pile pressing monitoring record system (Optional)

Guaranteed spare parts by large-scale production



New hydraulic walking chassis



Crane moment limiter (Optional)



Model		Unit	ZJY100B-III	ZJY200B	ZYJ260B-II
Overall dimensions	Working length	mm	6650	10322	11800
	Working width	mm	4100	4800	6200
	Transportation height	mm	3580	3350	3141
Maximum pile driving force		tf	90	200	260
Minimum pile driving speed		m/min	2.4	1.3	1.12
Maximum pile driving speed		m/min	8.3	9	8.1
Traveling capability	Longitudinal travel	m	1.6	2.2	3
	Lateral travel	m	0.4	0.4	0.6
	Steering angle	°	14	10	8
Lifting/lowering travel		m	1.4	1.4	0.9
Standard hoist			QY8C	QY12D	QY12D
Maximum hoisting length for center piles		m	9	14	14
Ground pressure	Long ship	Kpa	100	14.1	99
	Short ship	Kpa	119	14.2	121
Border pile spacing		mm	340	600	860
Minimum corner pile spacing		mm	340	657	1570
Maximum installable round pile clamping jaws		mm	350/400	Φ400	500
Maximum installable square pile clamping jaws		mm	350/400	400	500
Optional pile clamping box			3522/4022	4025	5022

Model		Unit	ZYJ360B-II	ZYJ460B-II	ZYJ680BJ	ZYJ860BG
Overall dimensions	Working length	mm	13133	13400	14000	14000
	Working width	mm	6530	7310	8360	8560
	Transportation height	mm	3238	3386	3240	3320
Maximum pile driving force		tf	360	460	680	860
Minimum pile driving speed		m/min	1.4	0.95	0.9	0.8
Maximum pile driving speed		m/min	7.2	8.8	9	7.7
Traveling capability	Longitudinal travel	m	3	3.6	3.6	3.6
	Lateral travel	m	0.6	0.6	0.7	0.7
	Steering angle	°	10	10	8	8
Lifting/lowering travel		m	0.9	1	1.1	1.1
Standard hoist			QY12C	QY16D	QY20C	QY25C
Maximum hoisting length for center piles		m	14	14.5	15	16.5
Ground pressure	Long ship	Kpa	122	112	137	154
	Short ship	Kpa	145	155	168	203
Border pile spacing		mm	1240	1045	600	680
Minimum corner pile spacing		mm	1620	1580	1160	1160
Maximum installable round pile clamping jaws		mm	600	600	600	600/800
Maximum installable square pile clamping jaws		mm	600	600	600	600/450
Optional pile clamping box			6025	6028/6014	6032/6016	8016/6038 6036/6016

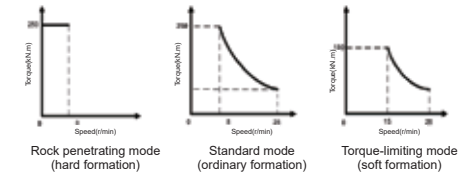
ROTARY DRILLING MACHINE



Engine



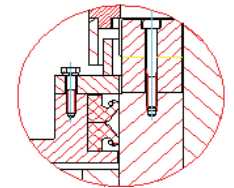
Multi-Mode Power Head, Enabling High-Efficiency Drilling in The Same Stratum



Hydraulic Components



Power Head



Special Chassis



ITEM		UNIT	SWDM160H2	SWDM200H	SWDM240-2	SWDM300H
Drilling	Max. Pile Diameter	mm	1500	1800	2000	2500
	Max. Pile Depth	m	56/44	64/51	69/54	95/62
Engine	Brand		Cummins	Cummins	Cummins	Cummins
	Model		QSB6.7-C260	QSB6.7-C260	QSM11-C400	QSM11-C400
	Rated Power	kW@rpm	194@2200	194@2200	298@2000	298@2000
Rotary Head	Max. Torque	kN.m	168	200	250	320
	Rotation Speed	rpm	6~42	6~35	6~32	6~32
	High-Speed Soil Throwing (optional)	rpm	70	70	70	330
Main Winch	Max. Line Pull	kN	165	220	280	80
	Max. Line Speed	m/min	80	75	72	32
	Rope Diameter	mm	28	28	32	260
Crowd System	Max. Pressure	kN	150	210	210	280
	Max. Line Pull	kN	160	210	240	6000
	Max. Stroke	mm	4000	5000	5000	110
Auxiliary Winch	Max. Line Pull	kN	50	80	80	65
	Max. Line Speed	m/min	50	55	58	24
	Rope Diameter	mm	16	20	20	
Drill Mast	Lateral Inclination	°	±4	±5	±5	±4
	Forward & Rearward Inclinaition	°	5/90	5/90	5/90	5/90
Chassis	Crawler Width	mm	700	700	800	900
	Track Retraction and Extension Width	mm	2980~3980	2900~4200	3000~4500	3000~4500
	Chassis Length	mm	4645	5144	5755	5698
Overall Machine	Working Height	mm	18330	21322	22504	24828
	Operating Weight	t	49	65	79	105

Drill pipe parameters

Model	Friction Kelly Bar	Hole depth (m)	Drill pipe weight (kg)	Configuration	Model	Interlocking Kelly Bar	Hole depth (m)	Drill pipe weight (kg)	Configuration
SWDM160H2	377-5X12.1m	56	7400	Standard	SWDM160H2	377-4X12.1m	44	7400	
	377-5X10m	45	6327	Standard		377-4X10m	35	6270	
SWDM200H	419-5X14m	64	8700		SWDM200H	D419-4X14m	51	9150	
	419-5X10m	45	6380			D419-4X10m	35	6580	
SWDM240-2		69	11900		SWDM240-2	440-4X15m	54	10700	Standard
	440-5X11m	49	9200			440-4X11m	39	8200	
SWDM300H	508-6X17m	95	17000		SWDM300H	508-4X17m	62	15800	Standard
	508-6X13m	71	13563			508-4X13m	46	12456	

CRANES



SWQY SERIES
CRAWLER CRANE



SWTC SERIES TELESCOPIC
CRAWLER CRANE

SSWQUY SERIES CRAWLER CRANE



SAFETY DEVICE

- Lifting hook over-hoist prevention device
- Boom backstop device
- Lifting working condition
- Load rate indicator
- Drums, slewing brake and its locking devices
- Moment limiter
- Anemometer
- Tension sensor, angle sensor
- Level
- Angle scale
- Over-releasing protection device of drums

SWTC SERIES TELESCOPIC CRAWLER CRANE



Telescopic boom crawler crane combines the advantages of telescopic boom crane and crawler crane;



The strengthened telescopic crawler chassis has a large wheel track



Lightweight design of high strength steel



Parameters		Type	SWTC 5	SWTC 5C	SWTC 16B	SWTC 26	SWTC 35B	SWTC 55B	SWTC 75B
Size	Size (L×W×H)	mm	5130×2320×2795	5130×2320×2795	12200×2800×3120	12870×2900×3190	13390×3300×3090	13960×3300×3280	14400×3300×3390
	A Track base	mm	2335	2335	3820	3945	4865	5300	5300
	B Crawler length	mm	2915	2915	4580	4610	5720	6200	6200
	C Ground clearance of platform	mm	751	751	1192	1185	1150	1230	1280
	D Tail swing radius	mm	1471	1471	3540	3675	4200	4535	4745
	E Chassis width	mm	2320	2320	2800/3600	2900/3950	3300/4560	3300/4960	3300/4960
	F Track width	mm	450	450	700	700	760	760	760
	G Min. ground clearance	mm	343	343	458	460	392	400	250
	J Track height	mm	650	650	985	990	980	980	1005
	K The top of the operating room is off the ground	mm	2795	2795	3120	3190	3090	3280	3120
	Parameters	Max. lifting load	t	5	5	16	26	35	55
Max. torque of basic boom		t.m	10.5	10.5	61.2	98	135	193	256.5
Max. lifting force of full extending boom		t.m	6	6	30.6	45	63	73.2	124.9
Length of basic boom		m	4.63	4.63	10	10.6	10.8	11.5	11.8
Longest arm length		m	15.63	15.63	31.3	33.1	40	43.5	44.2
Max. lifting height of the basic arm		m	5.3	5.3	10.1	10.5	10.6	11.6	11.2
Max. lifting height of the longest arm		m	16.13	16.13	31.5	33	39.6	43.8	43.6
Work Parameters	Boom rising / descending time	s	11/9	11/9	40/35	48/46	46/60	70/55	88/57
	Boom extending / retracting time	s	23/39	23/39	50/40	60/55	80/125	106/100	90/85
	Slewing speed	rpm	3	3	2.5	2.2	1.5	1.3	1.5
	Max. line speed	m/min	110	110	140	125	125	130	125
	Traveling speed	km/h	3.8	3.8	4	2.5	2.5	2.1	2.1
	Micro-traveling speed	km/h	0.25	0.25	2.4	1.25	1.5	1.4	1.4
Total weight	t	10.91	10.91	28.5	34.6	46.3	58	68.3	
Max. gradeability	%	36.4	36.4	40	40	40	40	40	
Ground pressure	MPa	0.051	0.051	0.053	0.062	0.076	0.089	0.082	
Engine	Brand		YANMAR		Cummins	Cummins	Cummins	Cummins	Cummins
	Model		4TNV98-ZSSU	4TNV98C-SSU	QSB5.9-C180	QSB6.7-C190	QSB6.7-C215	QSB6.7-C215	QSB6.7-C260
	Operation type		water cooled / turbol		turbol / air-air intercooler	water cooled / intercooler / turbol		turbol / air-air intercooler	water cooled / intercooler / turbol
	Displacement	L	3.319	3.319	5.9	6.7	6.7	6.7	6.7
	Power / Speed	km/rpm	43.4/2200	46.2/2200	132/2200	142/2200	158/2000	158/2000	194/2200
Full tank capacity	L	125	125	330	450	540	430	600	



EXCAVATOR



EXCAVATOR



Efficient



Economical



Enhance



Eco-friendly



E-Series Main Parameters Small-Sized Excavators

SPECIFICATIONS		UNIT	SWE60E	SWE70E	SWE80E9	SWE100E
Dimension (LxWxH)		mm	5875×1900×2615	5910×2080×2625	6140×2150×2610	6470×2320×2660
Parameter	A Wheel-base	mm	1965	2240	2200	2560
	B Track length	mm	2495	2760	2785	3225
	C Counterweight clearance	mm	700	700	780	845
	D Tail swing radius	mm	1600	1580	1800	1870
	E Tumbler length	mm	1880	2080	2150	2320
	F Track shoe width	mm	400	400	450	450
	G Ground clearance	mm	320	340	340	370
	H Track height	mm	595	580	640	700
	I Shipping length	mm	5875	5910	6140	6470
	J Cab height	mm	2615	2625	2610	2660
	K Transport width	mm	1900	2080	2130	2250
Working Ranges	A Max. cutting height	mm	5855	6020	7205	7515
	B Max. loading height	mm	4175	4200	5170	5315
	C Max. cutting depth	mm	3765	4015	4070	4375
	D Max. vertical wall digging depth	mm	3290	2840	3360	3930
	E Max. digging reach	mm	6175	6225	6440	6950
	F Max. digging reach at ground level	mm	6040	6085	6265	6800
	G Max. digging height	mm	445	475	350	—
	H Max. digging depth	mm	340	290	370	—
	R Min. swing radius	mm	2480	2305	1780	2250
	Bucket lengthxwidth	mm	1900×340	2080×415	2160×449	—
Overall Weight	Track with rubber	T	5.93	6.5	—	—
	Steel track	T	6	6.56	7.68	9.5
Standard bucket capacity		m ³	0.2	0.26	0.3	0.4
Bucket digging force		kN	47	50	58	64.5
Stick digging force		kN	31	31	40	43
Max. traction force		kN	48.9	57	62	70
Travel speed (Max./Min.)		km/h	4.07/2.43	4.0/2.3	4.7/2.8	4.5/2.7
Gradeability		°	35	35	35	35
Ground pressure		kPa	34.5	33.9	35	30.9
Swing speed		rpm	9.4	9	11.5	9
Engine			Yanmar	Yanmar	Yanmar	KUBOTA
	Model		4TNV94L-BVSU	4TNV98-ZCSSU	4TNV98T-ZCSSU	V3800-DI-TE3B-CBH2-5
	Type					
	Displacement	L	3.054	3.319	3.319	3.769
	Power	kW/rpm	36.2/2100	44/2200	44/2200	60.7/2200
Cylinder capacity		L	113	118	118	145
Main Pump	Type		2 variable displacement pumps, 1 gear pump		1 Variable displacement pumps	2 variable displacement pumps, 1 gear pump
	Flow	L/min	2x59+42	2x59+42	162	2x79+64
Main relief valve pressure		Mpa	2x24+21	2x24+21	28	30/24
Hydraulic cylinder capacity		L	96	96	96	140

E-Series Main Parameters Medium-Sized Excavators

SPECIFICATIONS		UNIT	SWE150E	SWE150F	SWE210F	SWE215E	SWE235E
Dimension (LxWxH)		mm	7815×2600×2825	7815×2600×2825	9570×2800×3045	9570×2800×3045	9520×2990×3120
Parameter	A Wheel-base	mm	3000	3000	3465	3465	3655
	B Track length	mm	3745	3745	4260	4260	4450
	C Counterweight clearance	mm	915	915	1060	1060	1070
	D Tail swing radius	mm	2350	2350	2850	2850	2750
	E Shipping width	mm	2520	2520	2710	2710	2710
	F Track gauge	mm	2000	2000	2200	2200	2390
	G Transport width	mm	2600	2600	2800	2800	2990
	H Shoe width	mm	600	600	600	600	600
	I Ground clearance	mm	410	410	470	470	480
	J Cab height	mm	2825	2825	2960	2960	2960
	K Shipping length	mm	7815	7815	9570	9570	9520
Working Ranges	A Max. cutting height	mm	8630	8630	9760	9760	9815
	B Max. loading height	mm	6130	6130	6980	6980	6930
	C Max. cutting depth	mm	5640	5640	6750	6750	6685
	D Max. depth cut at ground level (β)	mm	—	—	6570	6570	6515
	E Max. vertical wall digging depth	mm	4540	4540	6155	6155	6060
	F Max. digging reach	mm	8355	8355	9985	9985	9965
	G Max. digging reach at ground level	mm	8230	8230	9820	9820	9795
	H Min. swing radius	mm	2510	2510	3560	3560	3560
Overall Weight	Steel track	T	14.8	14.8	21.3	21.3	22.6
	Standard bucket capacity	m ³	0.6	0.6	0.95	0.95	1.05
Bucket digging force		kN	100	100	155	155	161
Stick digging force		kN	72.5	72.5	110	110	108
Travel speed (Max./Min.)		km/h	5.4/3.3	5.4/3.3	4.9/3.1	4.9/3.1	5.6/3.5
Gradeability		°	35	35	35	35	35
Ground pressure		kPa	36.8	36.8	46	46	46.5
Swing speed		rpm	11.1	11.1	11.8	11.8	13.7
Engine	Brand		Isuzu	Isuzu	Isuzu	Cummins	Cummins
	Model		GI-4JJ1XKSC	6BG1TRP-03	AM-4HK1XZSC03	QSB7	QSB7
	Type		4-Cylinder, 4-Stroke, Water-cooled		DI, Water-cooled, 4-Stroke, Supercharged, Intercooled		
	Displacement	L	2.999	2.999	5.193	6.7	6.7
	Power	kW/rpm	84/2200	95/2200	128.4/2000	124/2050	140/2050
Cylinder capacity		L	245	245	370	370	370
Main Pump	Type		2xPlunger pump	2xPlunger pump	2xPlunger pump	2xPlunger pump	2xPlunger pump
	Pressure	Mpa	31.4/34.3	31.4/34.3	32.4/34.3	32.4/34.3	31.4/34.3
	Flow	L/min	2x139	2x139	2x234	2x240	2x240
Pilot Pump	Pressure	Mpa	3.9	3.9	3.9	3.9	3.9
	Flow	L/min	21	21	21	21	21
Hydraulic cylinder capacity		L	150	150	250	250	250

E-Series Main Parameters Large-Sized Excavators

SPECIFICATIONS		UNIT	SWE335F (Narrow chassis)	SWE365E	SWE470E	SWE900ES
Dimension (LxWxH)		mm	11170×2960×3400	11170×3190×3400	12020×3340×3630	13885×3550×4975
Parameter	A Wheel-base	mm	4030	4030	4350	4945
	B Track length	mm	4960	4945	5355	6205
	C Counterweight clearance	mm	1190	1195	1253	1580
	D Tail swing radius	mm	3380	3380	3672	4850
	E Shipping width	mm	2960	2960	3240	3550
	F Track gauge	mm	2350	2590	2740	2750 / 3380
	G Transport width	mm	2950	3190	3340	3400 / 4030
	H Shoe width	mm	600	600	600	650
	I Ground clearance	mm	525	535	550	932
	J Cab height	mm	3110	3110	3145	3600
	L Shipping length	mm	11170	11170	12020	13885
	K Shipping height	mm	3400	3400	3630	4975
	Working Ranges	A Max. cutting height	mm	10515	10525	11010
B Max. loading height		mm	7440	7450	7750	8000
C Max. cutting depth		mm	7465	7455	7855	7265
D Max. depth cut at ground level (8')		mm	7290	7280	7710	7120
E Max. vertical wall digging depth		mm	6930	6920	6545	6505
F Max. digging reach		mm	11330	11330	12060	12390
G Max. digging reach at ground level		mm	11130	11130	11850	12055
H Min. swing radius		mm	4425	4425	4930	5330
Overall Weight	Steel track	T	32.2	35.8	45.8	90.5
Standard bucket capacity		m ³	1.5 Rock bucket	1.6 Rock bucket	2.2	5.5
Bucket digging force		kN	250	250	311	495
Stick digging force		kN	168	168	218	373
Travel speed (Max./Min.)		km/h	5.8/3.6	5.8/3.6	4.8/3.0	4/2.4
Gradeability		°	35	35	35	35
Ground pressure		kPa	57.2	63.6	83.5	126
Swing speed		rpm	10	10	8.6	6.5
Engine	Brand		Cummins	Cummins	Cummins	Cummins
	Model		QSL9-300T4f	QSL9	QSM11	QSX15
	Type		DI, Water-cooled, Supercharged, Intercooled, Post processing	EFl, Water-cooled, 4-Stroke, Supercharged, Intercooled	DI, Water-cooled, 4-Stroke, Supercharged, Intercooled	DI, Water-cooled, 4-Stroke, Turbocharging, Air cooled
	Displacement	L	8.9	8.9	10.8	15
	Power	kW/rpm	224/2000	227/2000	261/2000	418/1800
Cylinder capacity		L	640	640	690	1300
Main Pump	Type		2xPlunger pump	2xPlunger pump	2xPlunger pump	2xPlunger pump
	Pressure	Mpa	31.4/34.3	31.4/34.3	32.4/34.3	31.4/34.3
	Flow	L/min	2x324	2x324	2x360	2x504
Pilot Pump	Pressure	Mpa	3.9	3.9	3.9	3.9
	Flow	L/min	30	30	27	35
Hydraulic cylinder capacity		L	290	290	350	650



small-sized excavator



medium-sized excavator



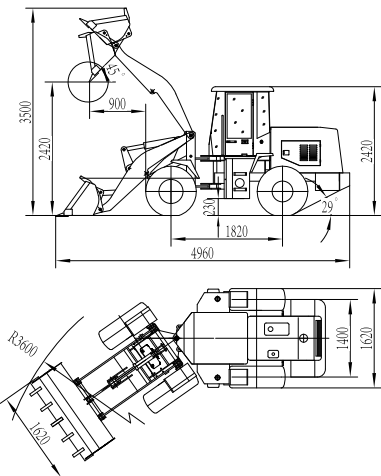
large-sized excavator

LOADER





Dimensions



Optional

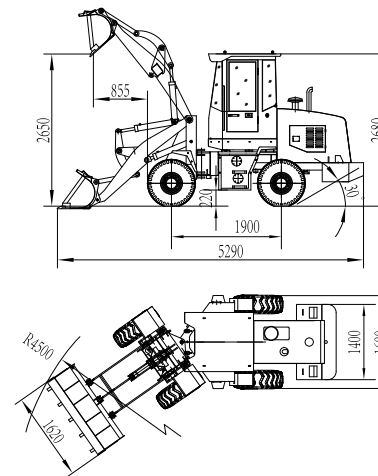
- (1) BA490B T1-3 (32kW)
- Xinchai BA490BT1-3 engine (32kW / Euro III)
- (2) Joystick control
- (3) Quick-hitch
- (4) Fork

Main Specification

Item	Specification
Overall dimensions(LxWxH)	4960*1620*2420 mm
Operating weight	3200kg
Bucket capacity	0.5m ³
Rated load	1000kg
Dumping height	2420mm
Dumping reach	900mm
Boom lifting time	4s
Max. breakout force	35kN
Max. drawing force	18kN
Max. speed	16km/h
Max. gradeability	28°
Min. turning radius(outside of rear wheel)	3600mm
Min. ground clearance	230mm
Wheel base	1820mm
Wheel tread	1400mm
Steering angle	35°
Tyre	12-16.5
Engine rated power	32kW/2400rpm

▲ Remark: heavy chassis for standard

Dimensions



Optional

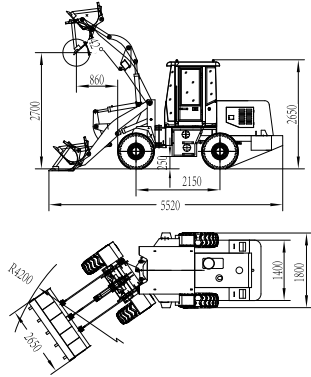
- (1) Joystick control
- (2) Quick-hitch
- (3) Fork

Main Specification

Item	Specification
Overall dimensions(LxWxH)	5920*1680*2680 mm
Operating weight	3700kg
Bucket capacity	0.5m ³
Rated load	1000kg
Dumping height	2650mm
Dumping reach	855mm
Boom lifting time	3.6s
Max. breakout force	34kN
Max. drawing force	30kN
Max. speed	17km/h
Max. gradeability	25°
Min. turning radius(outside of rear wheel)	4500mm
Min. ground clearance	220mm
Wheel base	1900mm
Wheel tread	1400mm
Steering angle	35°
Tyre	12-16.5
Engine rated power	36.8kW/2400rpm

▲ Remark: heavy chassis for standard

Dimensions



Optional

- (1) Joystick control
- (2) Quick-hitch
- (3) Fork

Main Specification

Item	Specification
Overall dimensions(LxWxH)	5520*1800*2650 mm
Operating weight	4500kg
Bucket capacity	0.7m ³
Rated load	1500kg
Dumping height	2700mm
Dumping reach	860mm
Boom lifting time	4.5s
Max. breakout force	46kN
Max. drawing force	33kN
Max. speed	19km/h
Max. gradeability	28°
Min. turning radius(outside of rear wheel)	4200mm
Min. ground clearance	250mm
Wheel base	2150mm
Wheel tread	1400mm
Steering angle	35°
Tyre	20.5-16
Engine rated power	38kW/2400rpm

▲ Remark: heavy chassis for standard

Dimensions



Optional

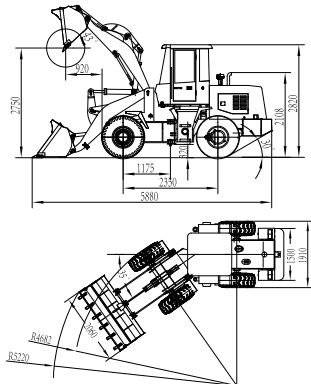
- (1) 1004-4L06 (56kW)
Lovol 1004-4L06 Engine, with Perkins Technology (56kW)
- (2) 4BTA3.9-C100(74kW)
Dongfeng Cummins 4BTA3.9-C100 engine (74kW)
- (3) Air condition
- (4) Joystick control
- (5) Quick-hitch
- (6) Fork

Main Specification

Item	Specification
Overall dimensions(LxWxH)	5755*1960*2850 mm
Operating weight	5300kg
Bucket capacity	0.9m ³
Rated load	1800kg
Dumping height	2750mm
Dumping reach	910mm
Boom lifting time	4.5s
Max. breakout force	46kN
Max. drawing force	35kN
Max. speed	25km/h
Max. gradeability	28°
Min. turning radius(outside of rear wheel)	4200mm
Min. ground clearance	330mm
Wheel base	2100mm
Wheel tread	1480mm
Steering angle	35°
Tyre	16/17-20
Engine rated power	50kW/2200rpm

▲ Remark: heavy chassis for standard

Dimensions



Optional

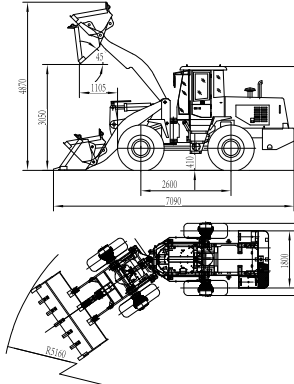
- (1) 1004-4L06 (60kW)
Lovol 1004-4L06 Engine, with Perkins Technology (60kW)
- (2) 4BTA3.9-C100(74kW)
Dongfeng Cummins 4BTA3.9-C100 engine (74kW)
- (3) B3.3TAA-C80(60kW)
Original Cummins B3.3TAA-C80 engine (60kW // Euro III)
- (4) Electric controlled gear-shift
- (5) Air condition
- (6) Joystick control
- (7) Quick-hitch
- (8) Fork
- (9) ROPS

Main Specification

Item	Specification
Overall dimensions(LxWxH)	5880*2060*2820 mm
Operating weight	6000kg
Bucket capacity	1.1m ³
Rated load	2000kg
Dumping height	2750mm
Dumping reach	920mm
Boom lifting time	5s
Max. breakout force	48kN
Max. drawing force	45kN
Max. speed	25km/h
Max. gradeability	30°
Min. turning radius(outside of rear wheel)	4682mm
Min. ground clearance	320mm
Wheel base	2350mm
Wheel tread	1500mm
Steering angle	35°
Tyre	16/17-20
Engine rated power	60kW/2400rpm

▲ Remark: heavy chassis for standard

Dimensions



Optional

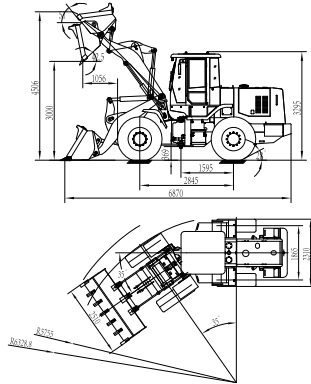
- (1) WP6G125E23
Deutz WP6G125E23 high-power engine
- (2) 6BT5.9-C130(97kW)
Dongfeng Cummins 6BT5.9-C130 engine (97kW / Euro I)
- (3) Air condition
- (4) Joystick control
- (5) Quick-hitch
- (6) Fork
- (7) ROPS

Main Specification

Item	Specification
Overall dimensions(LxWxH)	7090*2425*3270 mm
Operating weight	9800kg
Bucket capacity	1.7m ³
Rated load	3000kg
Dumping height	3050mm
Dumping reach	1105mm
Boom lifting time	5.5s
Max. breakout force	120kN
Max. drawing force	90kN
Max. speed	25km/h
Max. gradeability	30°
Min. turning radius(outside of rear wheel)	5160mm
Min. ground clearance	410mm
Wheel base	2600mm
Wheel tread	1800mm
Steering angle	35°
Tyre	17.5-25
Engine rated power	92kW/2200rpm

▲ Remark: heavy chassis for standard

Dimensions



Optional

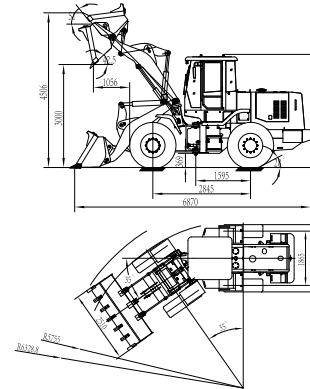
- (1) 6BT5.9-C130(97kW)
Dongfeng Cummins 6BT5.9-C130 engine (97kW / Euro I)
- (2) YD13 YD13 electric control box
- (3) Air condition
- (4) Joystick control
- (5) Quick-hitch
- (6) Fork
- (7) ROPS

Main Specification

Item	Specification
Overall dimensions(LxWxH)	6870*2510*3295 mm
Operating weight	10500kg
Bucket capacity	1.8m ³
Rated load	3000kg
Dumping height	3000mm
Dumping reach	1056mm
Boom lifting time	5.5s
Max. breakout force	103kN
Max. drawing force	90kN
Max. speed	36km/h
Max. gradeability	28°
Min. turning radius(outside of rear wheel)	5755mm
Min. ground clearance	369mm
Wheel base	2845mm
Wheel tread	1865mm
Steering angle	36°
Tyre	17.5-25
Engine rated power	92kW/2300rpm

▲ Remark: heavy chassis for standard

Dimensions



Optional

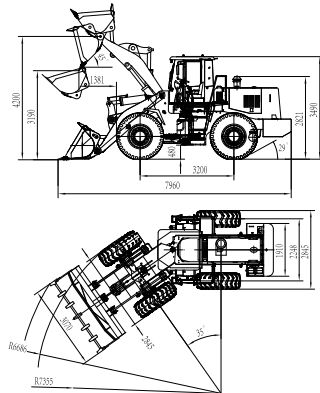
- (1) 6BT5.9-C130(97kW)
Dongfeng Cummins 6BT5.9-C130 engine (97kW / Euro I)
- (2) YD13 YD13 electric control box
- (3) Quick-hitch
- (4) Fork
- (5) ROPS

Main Specification

Item	Specification
Overall dimensions(LxWxH)	6870*2510*3295 mm
Operating weight	10500kg
Bucket capacity	1.8m ³
Rated load	3000kg
Dumping height	3000mm
Dumping reach	1056mm
Boom lifting time	5.5s
Max. breakout force	103kN
Max. drawing force	90kN
Max. speed	36km/h
Max. gradeability	28°
Min. turning radius(outside of rear wheel)	5755mm
Min. ground clearance	369mm
Wheel base	2845mm
Wheel tread	1865mm
Steering angle	36°
Tyre	17.5-25
Engine rated power	92kW/2300rpm

▲ Remark: heavy chassis for standard

Dimensions



Optional

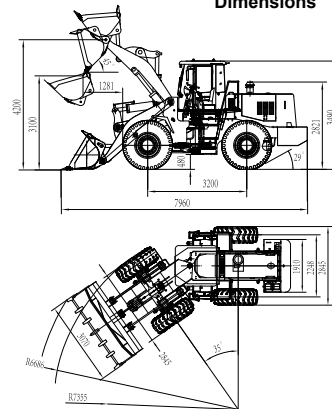
- (1) 6CTA8.3-C215
Dongfeng Cummins 6CTA8.3-C215 engine
- (2) Air condition
- (3) Joystick control
- (4) Quick-hitch
- (5) Fork
- (6) ROPS

Main Specification

Item	Specification
Overall dimensions(LxWxH)	7960*3070*3490 mm
Operating weight	17000kg
Bucket capacity	3m ³
Rated load	5000kg
Dumping height	3190mm
Dumping reach	1381mm
Boom lifting time	6.8s
Max. breakout force	170kN
Max. drawing force	150kN
Max. speed	36km/h
Max. gradeability	28°
Min. turning radius(outside of rear wheel)	6686mm
Min. ground clearance	480mm
Wheel base	3200mm
Wheel tread	2248mm
Steering angle	35°
Tyre	23.5-25
Engine rated power	162kW/2200rpm

▲ Remark: heavy chassis for standard

Dimensions



Optional

- (1) 6CTA8.3-C215
Dongfeng Cummins 6CTA8.3-C215 engine
- (2) Quick-hitch
- (3) Fork
- (4) ROPS

Main Specification

Item	Specification
Overall dimensions(LxWxH)	7960*3070*3490 mm
Operating weight	17000kg
Bucket capacity	3m ³
Rated load	5000kg
Dumping height	3100mm
Dumping reach	1281mm
Boom lifting time	6.8s
Max. breakout force	170kN
Max. drawing force	150kN
Max. speed	38km/h
Max. gradeability	28°
Min. turning radius(outside of rear wheel)	6686mm
Min. ground clearance	480mm
Wheel base	3200mm
Wheel tread	2248mm
Steering angle	35°
Tyre	23.5-25
Engine rated power	162kW/2200rpm

▲ Remark: Air condition, Joystick control, electronic control, ZF TECH WG180 gearbox, heavy chassis for standard

SWE08B


Operating weight: 1.01t
Standard bucket capacity: 0.022m³
Rated power: 7.2kW/2400rpm

SWE18UF


Operating weight: 1.88t
Standard bucket capacity: 0.04m³
Rated power: 13.4kW/2200rpm

SWE20F


Operating weight: 1.94t
Standard bucket capacity: 0.04m³
Rated power: 13.4kW/2200rpm

SWE25UF


Operating weight: 2.65t
Standard bucket capacity: 0.08m³
Rated power: 14.6kW/2400rpm

SWE35UF


Operating weight: 3.66t
Standard bucket capacity: 0.11m³
Rated power: 18.5kW/2200rpm

SWE60B


Operating weight: 6.11t
Standard bucket capacity: 0.18m³
Rated power: 36.2kW/2100rpm

SWE60UF


Operating weight: 5.63t
Standard bucket capacity: 0.18m³
Rated power: 36.5kW/2000rpm

SWE80E9


Operating weight: 7.68t
Standard bucket capacity: 0.3m³
Rated power: 44kW/2200rpm

SWE90UF


Operating weight: 8.2t
Standard bucket capacity: 0.26m³
Rated power: 46.2kW/2200rpm

SWE100E


Operating weight: 9.5t
Standard bucket capacity: 0.4m³
Rated power: 60.7kW/2200rpm

SWE150E


Operating weight: 14.8t
Standard bucket capacity: 0.6m³
Rated power: 95kW/2200rpm

SWE150W


Operating weight: 13.85t
Standard bucket capacity: 0.6m³
Rated power: 124kW/2250rpm

SWE155F


Operating weight: 15.6t
Standard bucket capacity: 0.61m³
Rated power: 93kW/2200rpm

SWE210


Operating weight: 21.3t
Standard bucket capacity: 0.95m³
Rated power: 122kW/2000rpm

SWE215F


Operating weight: 21.8t
Standard bucket capacity: 1.0m³
Rated power: 129kW/2200rpm

SWE215E


Operating weight: 21.3t
Standard bucket capacity: 1.1m³
Rated power: 124kW/2050rpm

SWE235ES-3


Operating weight: 23.3t
Standard bucket capacity: 1.4m³
Rated power: 124kW/2050rpm

SWE470E-3


Operating weight: 45.8t
Standard bucket capacity: 2.2m³
Rated power: 261kW/2000rpm

SWDM60


Overall height: 12.7m
Max. drilling diameter: 1m
Max. drilling depth: 27m

SWDM160


Overall height: 18.5m
Max. drilling diameter: 1.5m
Max. drilling depth: 56m

SWDM200


Overall height: 20.4m
Max. drilling diameter: 1.8m
Max. drilling depth: 62m

SWDM220


Overall height: 21.5m
Max. drilling diameter: 2m
Max. drilling depth: 67m

SWDM260


Overall height: 22.7m
Max. drilling diameter: 2.2m
Max. drilling depth: 72m

SWDM280


Overall height: 23.5m
Max. drilling diameter: 2.5m
Max. drilling depth: 86m

SWDM300H


Overall height: 24.5m
Max. drilling diameter: 2.5m
Max. drilling depth: 94m

SWDM360H-III


Overall height: 27.2m
Max. drilling diameter: 2.5m
Max. drilling depth: 102m

SWDM450


Overall height: 31.1m
Max. drilling diameter: 3m
Max. drilling depth: 121m

SWCH760-160M


Max. torque: 987N.m/1500rpm
Rated power: 194kW
Max. lifting force: 666kN(68t)

SWCH890-190M


Max. torque: 987N.m/1500rpm
Rated power: 194kW
Max. lifting force: 784kN(80t)

ZYJ100B-III


Max. piling force: 90tf
Max. piling speed: 8.3m/min
Side pile distance: 340mm

ZYJ260B-I


Max. piling force: 260tf
Max. piling speed: 8.1m/min
Side pile distance: 860mm

ZYJ460B-II


Max. piling force: 460tf
Max. piling speed: 8.8m/min
Side pile distance: 1045mm

ZYJ860BG


Max. piling force: 860tf
Max. piling speed: 7.7m/min
Side pile distance: 690mm

ZYJ1060B-II


Max. piling force: 1060tf
Max. piling speed: 7.8m/min
Side pile distance: 995mm

SWDB165A


Drilling range: 138-180mm
Max. hole depth: 25m
Max. feed force: 40kN

SWDB200A


Drilling range: 180-255mm
Max. hole depth: 30m
Max. feed force: 75kN

SWDB250


Drilling range: 230-270mm
Max. hole depth: 30m
Max. feed force: 75kN

SWDE120A


Drilling range: 90-138mm
Max. hole depth: 24m
Max. feed force: 32kN

SWDE200A


Drilling range: 178mm
Max. hole depth: 18m
Max. feed force: 75kN

SWDH89A


Drilling range: 64-89mm
Max. hole depth: 20m
Max. feed force: 25kN

SWDH102A


Drilling range: 76-115mm
Max. hole depth: 25m
Max. feed force: 25kN

SWDL600


Drilling range: 76-90mm
Max. hole depth: 3m
Max. feed force: 30kN

SWTC05D


Total weight: 10.91t
Max. lifting load: 5t
Longest arm length: 15.63m

SWTC10


Total weight: 20.5t
Max. lifting load: 10t
Longest arm length: 21.2m

SWTC5


Total weight: 10.91t
Max. lifting load: 5t
Longest arm length: 15.63m

SWTC35B


Total weight: 46.3t
Max. lifting load: 35t
Longest arm length: 40m

SWTC75B


Total weight: 68.3t
Max. lifting load: 75t
Longest arm length: 40.2m

SWQY160


Overall weight: 169t
Max. lifting load: 160t
Length of main arm: 18-64m

SWL2830


Working weight: 2.83t
Loading capacity: 750kg
Bucket capacity: 0.4m³

SWL3220


Working weight: 3.45t
Loading capacity: 1100kg
Bucket capacity: 0.53m³


SWL3230



Working weight: 3.45t
Loading capacity: 1000kg
Bucket capacity: 0.53m³


SWL4018


Working weight: 4t
Loading capacity: 1500kg
Bucket capacity: 0.67m³



 Tower #1, Level #7, Police Plaza Concord Shopping Mall
Dhaka-1212, Bangladesh.

 +880 1708 45 60 07
+880 1708 45 60 37

 sunward@hnsautomobiles.com
info@hnsautomobiles.com

www.hnsautomobiles.com