

# Creating a Global High-end Brand of Aerial Work Equipment



# SWSL Electric Scissor Aerial Work Platform

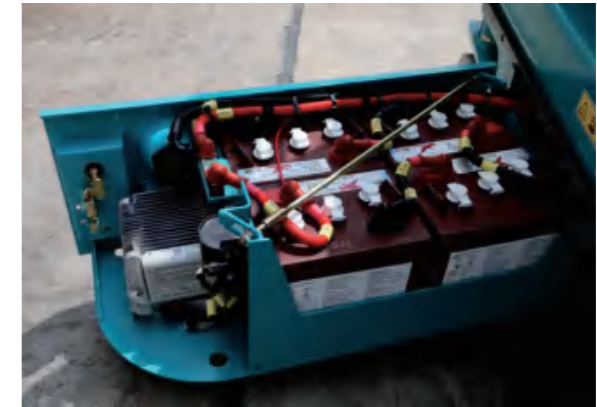


## Features of SWSL Electro-hydraulic Driven Scissor Aerial Work Platform:

- ◆ A proportional control level, to control the lifting speed and the traveling speed at any speed;
- ◆ Full-height traveling and steering, convenient to work and more efficient ;
- ◆ A Unidirectional extension platform, to increase the operating radius and improve the obstacle crossing capability;
- ◆ A screw-out box on both sides of the chassis, to facilitate the maintenance;
- ◆ Turning radius of models in the series: 0, suitable for operations in small and narrow spaces.

## Features of SWSL Electric Driven Scissor Aerial Work Platform:

- ◆ Automatic display of fault codes by the system, to facilitate the maintenance;
- ◆ A long battery service life of the models in the series, to work efficiently;
- ◆ A pit protector provided to improve the work safety;
- ◆ Self-lubricating composite fiber bearings used to exempt greasing in the future;
- ◆ Scissor arms made of high-strength steel (2500), safer and lighter in dead weight.



Standard Functions			
▪ Proportional control	▪ Unidirectional extension platform	▪ Folding fence	▪ Platform self-locking door
▪ Airless tires without imprint	▪ Timer	▪ Standard transport forklift holes	▪ Safe maintenance support rods
▪ Horn	▪ Flash lamp	▪ Motion buzzer	▪ DC motor driven
▪ Pit protector	▪ Emergency descending system	▪ Emergency stop system	▪ Automatic braking system
▪ Tilting protection system	▪ Charging protection system	▪ Fault diagnosis system	▪ Platform work lights
Optional Functions			
▪ Air pipe to platform	▪ AC power source connected to platform	▪ GPS tracking system	▪ Overload protection system
▪ Maintenance-free battery	▪ Lithium battery and management system	▪ Intelligent interconnection system	

### Specifications of SWSL Electric Driven Scissor Aerial Work Platform

Item		SWSL0607DC	SWSL0807DC	SWSL1008DC	SWSL1212DC	SWSL1412DC
	Maximum working height	6.5m	8m	10m	12m	14m
A	Maximum platform height	4.5m	6m	8m	10m	12m
B	Height of retracted platform	0.95m	1.05m	1.26m	1.36m	1.49m
C	Length of working platform	1.29m	1.7m	2.27m	2.27m	2.27m
	Extension dimension of platform	0.6m	0.9m	0.9m	0.9m	0.9m
D	Width of working platform	0.7m	0.74m	0.81m	1.15m	1.15m
E	Height - retracted (guardrail raised)	2.06m	2.17m	2.36m	2.49m	2.63m
	Height - retracted (guardrail folded)	1.7m	1.79m	1.86m	1.95m	2.09m
F	Overall length	1.44m	1.86m	2.46m	2.47m	2.47m
G	Overall width	0.76m	0.76m	0.83m	1.17m	1.17m
H	Wheel base	1.05m	1.38m	1.87m	1.87m	1.87m
I	Ground clearance (retracted state)	0.06m	0.083m	0.11m	0.11m	0.11m
J	Ground clearance (extended state)	0.017m	0.02m	0.02m	0.02m	0.02m
<b>Performance</b>						
	Rated load	240kg	230kg	230kg	320kg	320kg
	Safe working load of extended platform	100kg	113kg	113kg	113kg	113kg
	Maximum number of workers	2	2	2	2	2
	Travel speed (retracted state)	3.6km/h	4.5km/h	4.5km/h	4.0km/h	4.0km/h
	Travel speed (extended state)	0.8km/h	0.8km/h	0.8km/h	0.8km/h	0.8km/h
	Turning radius (inside)	0.4m	0m	0m	0m	0m
	Turning radius (outside)	1.6m	1.67m	2.1m	2.2m	2.2m
	Ascending/descending speed	20s / 22s	20s / 27s	32s / 40s	55s / 38s	62s / 42s
	Maximum gradeability**	30%	25%	25%	25%	25%
	Maximum allowed working angle	1.5° / 3°	1.5° / 3°	1.5° / 3°	1.5° / 3°	1.5° / 3°
	Control	Proportional control	Proportional control	Proportional control	Proportional control	Proportional control
	Drive	DC motor rear driven	DC motor rear driven	DC motor rear driven	DC motor rear driven	DC motor rear driven
	Multi-disc brake	Two front wheels	Two front wheels	Two front wheels	Two front wheels	Two front wheels
	Tire - airless without imprint (outer diameter X width)	230mm×80mm	323mm×100mm	381mm×127mm	381mm×127mm	381mm×127mm
	Battery	2×12V/85Ah	4×6V/210Ah	4×6V/225Ah	4×6V/240Ah	4×12V/300Ah
	Charger	24V/15A	24V/30A	24V/30A	24V/30A	24V/30A
	Weight	900kg	1545kg	2100kg	2950kg	3000kg

\* The working height equals to the platform height plus 2 m.

\* The gradeability is adaptive to driving on slopes; refer to the Operation Manual for relevant levels of gradeability.

### Specifications of SWSL Electro-hydraulic Driven Scissor Aerial Work Platform

Item		SWSL0807HD	SWSL1008HD	SWSL1212HD	SWSL1412HD	SWSL1614HD
	Maximum working height	8m	10m	12m	14m	15.8m
A	Maximum platform height	6m	8m	10m	12m	13.8m
B	Height of retracted platform	1.05m	1.26m	1.36m	1.49m	1.53m
C	Length of working platform	1.7m	2.27m	2.27m	2.27m	2.64m
	Extension dimension of platform	0.9m	0.9m	0.9m	0.9m	0.9m
D	Width of working platform	0.74m	0.81m	1.15m	1.15m	1.15m
E	Height - retracted (guardrail raised)	2.17m	2.36m	2.49m	2.63m	2.62m
	Height - retracted (guardrail folded)	1.79m	1.86m	1.96m	2.09m	2.1m
F	Overall length	1.86m	2.46m	2.47m	2.47m	2.87m
G	Overall width	0.76m	0.83m	1.17m	1.17m	1.4m
H	Wheel base	1.38m	1.87m	1.87m	1.87m	2.24m
I	Ground clearance (retracted state)	0.07m	0.11m	0.11m	0.11m	0.12m
J	Ground clearance (extended state)	0.02m	0.02m	0.02m	0.02m	0.02m
<b>Performance</b>						
	Rated load	230kg	230kg	320kg	320kg	260kg
	Safe working load of extended platform	113kg	113kg	113kg	113kg	113kg
	Maximum number of workers	2	2	2	2	2
	Travel speed (retracted state)	3.0km/h	3.2km/h	3.2km/h	3.2km/h	3.2km/h
	Travel speed (extended state)	0.8km/h	0.8km/h	0.8km/h	0.8km/h	0.8km/h
	Turning radius (inside)	0m	0m	0m	0m	0m
	Turning radius (outside)	1.67m	2.1m	2.2m	2.2m	2.5m
	Ascending/descending speed	20s / 27s	32s / 40s	55s / 38s	62s / 42s	88s / 60s
	Maximum gradeability**	25%	25%	25%	25%	25%
	Maximum allowed working angle	1.5° / 3°	1.5° / 3°	1.5° / 3°	1.5° / 3°	1.5° / 3°
	Control	Proportional control	Proportional control	Proportional control	Proportional control	Proportional control
	Drive	Two front wheels	Two front wheels	Two front wheels	Two front wheels	Two front wheels
	Multi-disc brake	Two rear wheels	Two rear wheels	Two rear wheels	Two rear wheels	Two rear wheels
	Tire - airless without imprint (outer diameter X width)	305mm×100mm	381mm×127mm	381mm×127mm	381mm×127mm	381mm×127mm
	Battery	4×6V/210Ah	4×6V/225Ah	4×6V/240Ah	4×12V/300Ah	4×12V/300Ah
	Charger	24V/30A	24V/30A	24V/30A	24V/30A	24V/30A
	Weight	1530kg	2080kg	2940kg	2980kg	3500kg

## SWSL Off-road Diesel Scissor Aerial Work Platform

- ◆ Excellent off-road performance adaptive to various types of complicated ground conditions;
- ◆ Slid-in engine bracket, to facilitate the routine inspections and maintenance;
- ◆ Bidirectional extension platform of a large working area;
- ◆ Inward opening auxiliary platform door, to facilitate material loading/unloading;
- ◆ One-touch automatic leveling outriggers, quick for leveling.



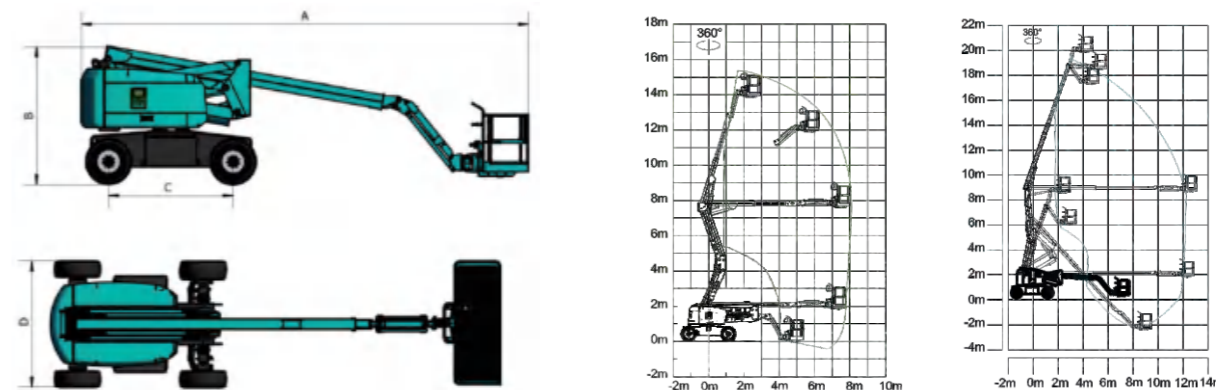
## Specifications of SWSL Self-propelled Off-road Scissor Aerial Work Platform

Item		SWSL1223RT	SWSL1623RT	SWSL2023RT
	Maximum working height	12m	16.5m	20m
A	Maximum platform height	10m	14.5m	18m
B	Platform height (retracted)	1.72m	1.93m	2.14m
C	Platform length (retracted)	5.33m	5.33m	5.33m
	Platform length (extended)	7.53m	7.53m	7.53m
D	Extended platform length	1.2m	1.2m	1.2m
E	Platform width (outside)	1.9m	1.9m	1.9m
F	Overall height (guardrail raised)	2.88m	3.1m	3.31m
	Overall height (guardrail folded)	2.05m	2.27m	2.48m
G	Overall width	2.39m	2.39m	2.39m
H	Overall length	5.33m	5.33m	5.33m
I	Ground clearance	0.27m	0.27m	0.27m
J	Wheel base	2.88m	2.88m	2.88m
<b>Performance</b>				
	Safe working load	1200kg	780kg	545kg
	Safe working load of extended platform	227kg	227kg	227kg
	Maximum number of workers	5	5	4
	Travel height	Total height	10m	10m
	Travel speed (retracted)	10km/h	7.2km/h	7.2km/h
	Travel speed (extended)	See the list enclosed	0.6km/h	0.6km/h
	Maximum working angle (lateral/longitudinal)	See the list enclosed	2° / 3°	2° / 3°
	Minimum turning radius (inside/outside)	2.08m / 5.3m	2.08m / 5.3m	2.08m / 5.3m
	Ascending/descending speed	46sec / 46sec	55sec / 50sec	65sec / 59sec
	Maximum gradeability	40%	40%	40%
	Control	Proportional control	Proportional control	Proportional control
	Drive	Four wheels	Four wheels	Four wheels
	Tire	33X12-20	33X12-20	33X12-20
	Make and model of engine	Kubota V2403-M-DI	Kubota V2403-M-DI	Kubota V2403-M-DI
	Engine power	36.5kW/2600rpm	36.5kW/2600rpm	36.5kW/2600rpm
	Hydraulic oil tank	151L	151L	151L
	Fuel tank	95L	95L	95L
	Overall weight	8170kg	9200kg	10380kg

Standard Functions			
▪ Horn	▪ Safe maintenance support rods	▪ Folding fence	▪ Emergency descending system
▪ Motion buzzer	▪ Four-wheel drive	▪ Oil pipe anti-blasting system	▪ Platform self-locking door
▪ Work flash lamp	▪ Automatic braking system	▪ Fault diagnosis system	▪ Overload restriction system
▪ Work timekeeping instrument	▪ Proportional control	▪ Tilting protection system	▪ Automatic hydraulic leveling outrigger
▪ Slide-in engine bracket	▪ Bidirectional extension platform	▪ Emergency stop button	▪ Off-road airless tire
Optional Functions			
▪ Hydraulic engine	▪ Locker	▪ Platform folding chair	▪ Tire without imprint
▪ Fire extinguisher (6kg)	▪ Platform work lights	▪ AC power cord connected to platform	▪ Hydraulic oil radiator

# SWA Self-propelled Towable Boom Aerial Work Platform

- ◆ The structure is in line with the innovation spirit of Sunward, and fast ascending/descending of the platform can be realized with the unique design of the boom structure.
- ◆ With excellent workmanship, the appearance of the complete equipment has inherited the tailless feature of Sunward's intelligent aerial work platforms, and it also has a distinguished style and a nice looking appearance.
- ◆ With the top working range in the industry, both the working planes and construction efficiency of clients can be increased.
- ◆ With reality oriented design, the maintenance face of the engine is sufficiently exposed to facilitate the maintenance.
- ◆ With the strong power and the 4-wheel drive system coordinated with a specialized float axle chassis, various complicated road conditions can be challenged.



## Specifications of SWA Self-propelled Towable Boom Aerial Work Platform

Item		SWA16J	SWA22JE
Maximum working height		16m	21.6m
Maximum horizontal span		8.02m	12.1m
Height of maximum horizontal span		7.6m	8.9m
A	Length - retracted	6.93m	8.92m
B	Height - retracted	2.17m	2.58m
C	Wheel base	2.25m	2.49m
D	Overall width	2.3m	2.49m
Size of work platform		1.83mx0.76m	2.40mx0.91m
Performance			
Rated load		250kg	250kg
Rotary turntable		360° continuous	360° continuous
Travel speed (retracted)		6.8km/h	6.1km/h
Gradeability - 4-wheel drive - retracted		45%	45%
Maximum allowed working angle		5°	3°/5°
Power source		Kubota v2403	48V 390Ah
Overall weight		7500kg	9800kg

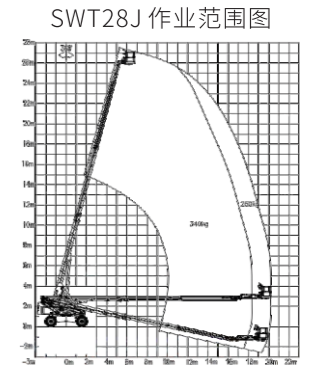
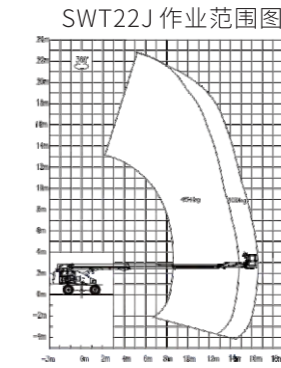
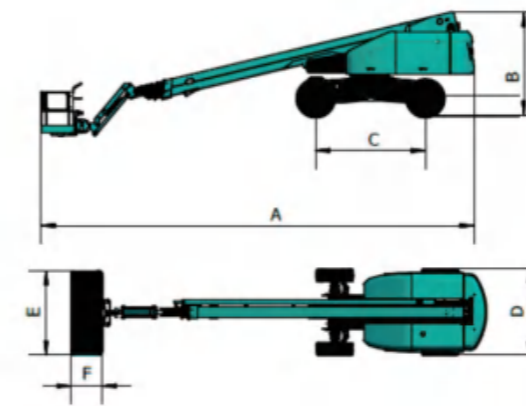
\* The working height equals to the platform height plus 2 m.

\* The gradeability is adaptive to driving on slopes; refer to the Operation Manual for relevant levels of gradeability.

Standard Functions			
▪ Proportional control	▪ Standard 4X4 drive	▪ Work timekeeping instrument	▪ 360-degree continuous rotation of turntable
▪ Emergency pump	▪ Swing axle chassis	▪ Hydrostatic automatic leveling system	▪ Emergency descending system
▪ Horn	▪ Tilting protection system	▪ Remote communication system	▪ Fault diagnosis system
Optional Functions			
▪ Air pipe to platform	▪ Foam filled tire	▪ GPS tracking system	▪ Platform work lights

# SWT Self-propelled Straight Boom Aerial Work Platform

- ◆ A Luffing mechanism with double-swing-rod linkage mechanism, more stable for operations ;
- ◆ A boom with hexagonal sections, with small stress on weld joints and a higher safety factor;
- ◆ A dual-load control system, to satisfy the requirements of different construction conditions;
- ◆ Total proportional gradual control of equipment movement, for stable operations without impacts;
- ◆ An emergency motor working system of 15 min available, to steadily retract the complete equipment in the case of a failure of the main power.



## Specifications of SWT Self-propelled Straight Boom Aerial Work Platform

Item		SWT20	SWT22J	SWT26	SWT28J
Maximum working height		21.3m	22.8m	26.2m	27.8m
Maximum horizontal extension		16m	16.5m	20m	20.2m
A	Length - retracted	8.9m	10.36m	10.9m	12.5m
B	Height - retracted	2.78m	2.78m	2.88m	2.88m
C	Wheel base	2.52m	2.52m	3.05m	3.05m
D	Overall width	2.49m	2.49m	2.49m	2.49m
E	Length of working platform	2.44m	2.44m	2.44m	2.44m
F	Width of working platform	0.91m	0.91m	0.91m	0.91m
Performance					
Rated load		300/454kg	300/450kg	270/450kg	250/340kg
Platform rotation		160°	160°	160°	160°
Rotary turntable		360° continuous	360° continuous	360° continuous	360° continuous
Travel speed (retracted)		5.8km/h	5.8km/h	5.8km/h	5.8km/h
Gradeability - 4-wheel drive - retracted		45%	45%	45%	45%
Maximum allowed working angle		5°	5°	5°	5°
Power source		Kubota	Kubota	Kubota	Kubota
Overall weight		11980kg	12250kg	16650kg	16800kg

\* The working height equals to the platform height plus 2 m.

\* The gradeability is adaptive to driving on slopes; refer to the Operation Manual for relevant levels of gradeability.

Standard Functions			
▪ Proportional control	▪ Fault diagnosis system	▪ Flash lamp	▪ Hydrostatic automatic leveling system
▪ Work timekeeping instrument	▪ Remote communication system	▪ Standard 4X4 drive	▪ Emergency descending system
▪ Tilting protection system	▪ Buzzer	▪ Screw-out engine bracket	▪ Emergency pump
▪ Load sensing system	▪ Horn	▪ 360-degree continuous rotation of turntable	▪ Swing axle chassis
Optional Functions			
▪ Aerial guard	▪ AC power source connected to platform	▪ GPS tracking system	▪ Platform work lights
▪ Biodegradable hydraulic oil	▪ Foam filled tire		